

REFERENCE NOTE:

This drawing is to be read in conjunction with drawings and supporting documentation produced by the following consultants:-

WHITE ROYAL OXON LTD.

BARRELL TREE CONSULTANCY LTD.

ECOLOGICAL SURVEY AND ASSESSMENT LTD.

TGD LANDSCAPE LTD.

IMPORTANT NOTE:

Accurate setting out of buildings on (an in relation to) site is critical. For setting out details refer to Consultant Engineers drawings.

NOTE:

Light switches and door bell switch to be 1200mm above F.F.L.
All other electrical sockets to be 450mm above F.F.L. (unless stated otherwise).

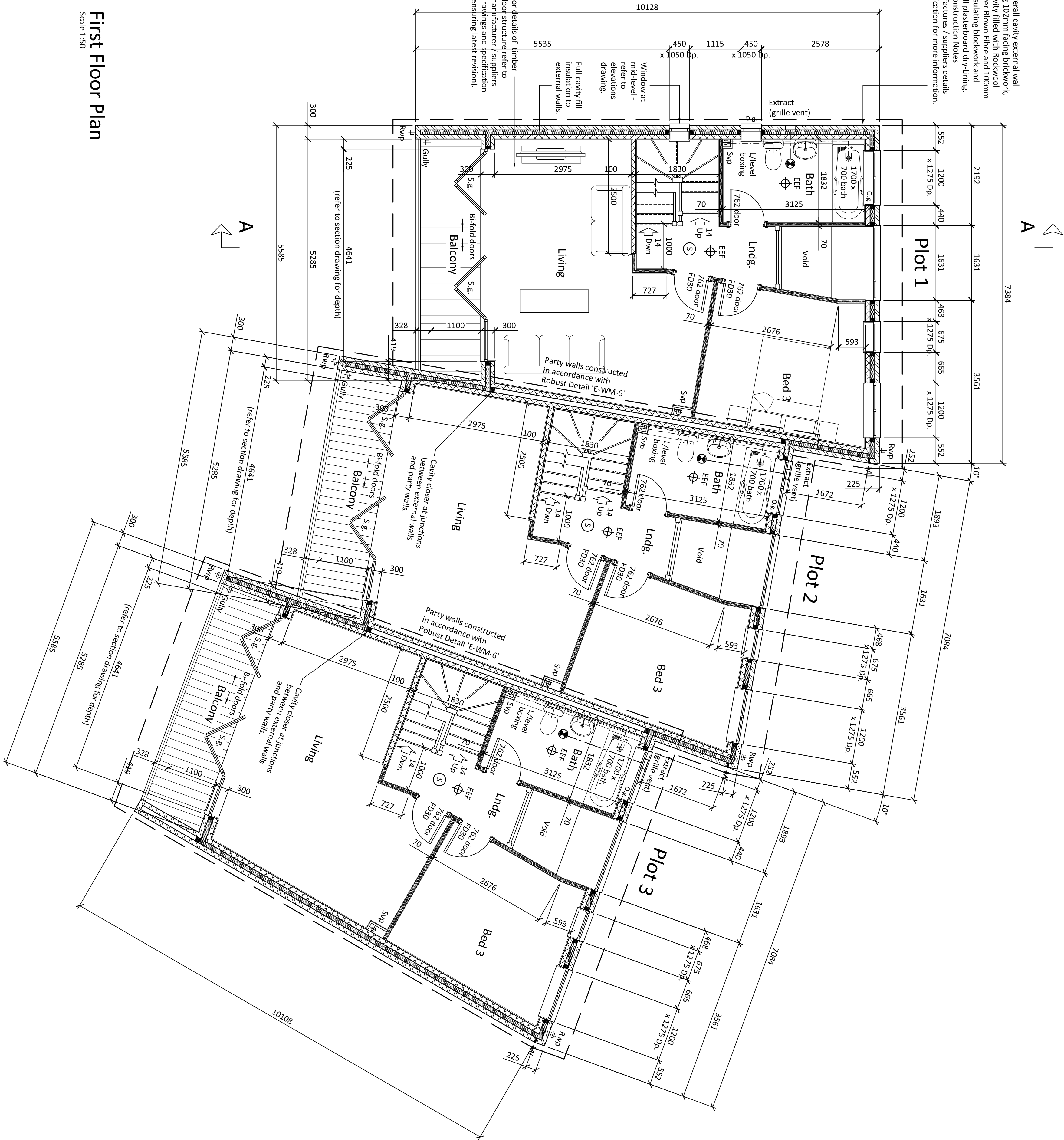
NOTE:

Construction work to follow the instructions and guidance of the 'Accredited Construction Details for Part L' - June 2007 1st edition for the purpose of achieving insulation continuity and air tightness.

KEY TO SERVICES:

- Mechanical extract fan.
- Grade D smoke alarm (mainly powered).
- Light fitting to be dedicated energy efficient type only accepting bulbs with a maximum capacity greater than 40 lumens per circuit watt.
- Double switched socket outlet (1200mm above FFL)
- BT socket (1200mm above FFL)
- Soil and vent pipe.
- Air admittance valve (Purgio).
- Back inlet gully.
- Rainwater downpipe.
- Water riser / stop cock.
- Gas riser / stop cock.
- Electricity meter in recessed wall box.
- Gas meter in recessed wall box.
- Water meter in concealed ground box.
- Gas fired boiler with balanced flue.
- Mechanical ventilation heat recovery unit.

300mm overall cavity external wall comprising 102mm facing brickwork, 100mm cavity filled with Rockwool Energy Saver Blown Fibre and 100mm aircrete insulating blockwork and 22mm o/all plasterboard dry-lining. Refer to Construction Notes and manufacturers / suppliers details and specification for more information.



GENERAL NOTES:

- For details and specifications of all elements illustrated on this drawing refer to Project Construction Notes ensuring latest revision at all times.
- This drawing is to be read in conjunction with all relevant Consultant Engineer and sub-contractor drawings, schedules and specifications ensuring latest revision at all times.
- All dimensions shown are to structural elements (not to finishes) unless stated otherwise. For clear internal dimensions submit finishes from overall dimensions. See the Project Construction Notes for finishes to each wall condition.
- All dimensions to be checked on site prior to commencing any work. Any discrepancies should be reported to the project designer immediately. Please do not scale these drawings.
- If in doubt ask.

KEY TO WALLS:

- 102mm facing brickwork (to Local Planning Authority approval).
- 100mm aircrete insulating blockwork (block strengths as specified by Consultant Engineer).
- 140mm aircrete insulating blockwork (block strengths as specified by Consultant Engineer).
- 70mm metal 'C' studwork partition.
- Movement joint positions from Doc level upwards. Refer also to Consultant Engineers details.
- Sub-ground floor ventilation air brick positions complete with telescopic ventilation ducts (positioned at max. 1.5m centres).

Rev.	Description	Date	By	Ch
A	PRELIMINARY ISSUE	29.07.10	WAH	MC

Drawing Status: Building Regulations

14 Ruby Close
Totton
Southampton
Hampshire
SO40 2BF



Office 02380 871104
Fax 02380 871104
Email admin@abc-designs.co.uk
Web www.abc-designs.co.uk

Client Stoneham Homes

Project 3No. New Dwellings
49 Thorold Road
Southampton
Hampshire

First Floor Plan

Drawn	Scale	Checked	Date
WAH	1:50 @ A1	MC	July 10
Drawing no.	Revision		
1009-WD06	D		